

REPORT OF INVESTIGATION

SUBJECT: SEPTIC TANK INSTALLATIONS

DATE:

In order to determine the suitability of the subject, Properties for installation of Septic Tank on individual Property or lots, both Topographic and Sub-Surface Properties were investigated. Sub-Surface investigations used in determining Percolation Rates and compiling soil logs were performed in accordance with and as set forth in Division of Health Chapter 10D-6. The results of these investigations indicate that minimum requirements are exceeded for all lots tested. Pertinent data is as shown on the development plan.

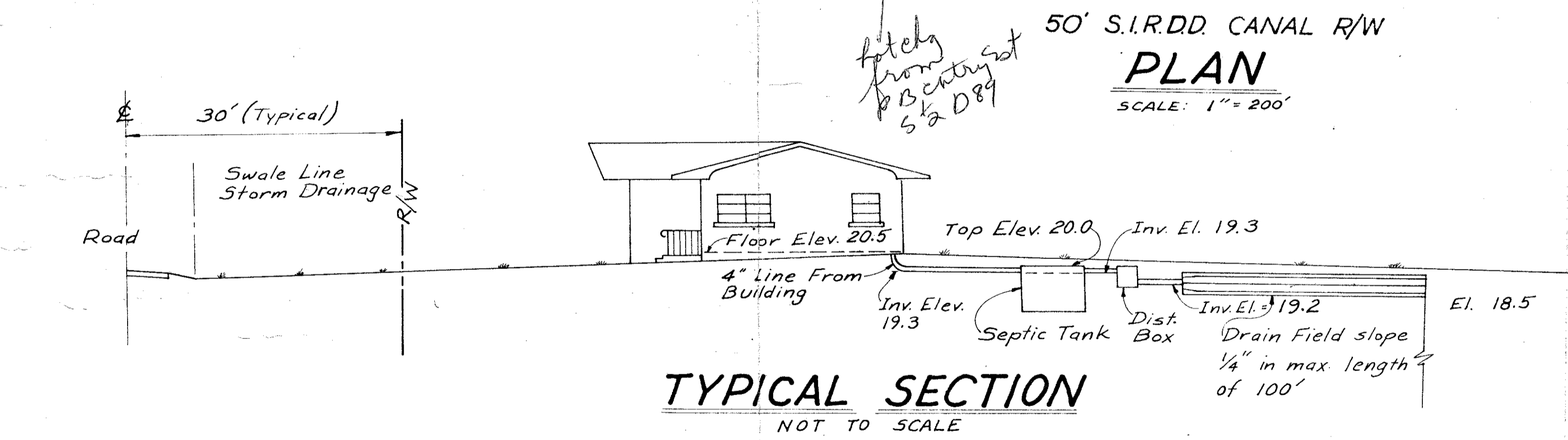
L.E. LINDAHL, P.E.
Reg. Eng. No. 11220
STATE OF FLORIDA

Elev. 13.5 to 17.5

GREY SAND	Class I
TAN SAND	Group SP/SW
SAND/SHELL	Class I
	W.T. Group SP/SW
	Class II
	Group SM

TYPICAL CORE BORING

730 El. 16.6 1.00 MIN/INCH 0-3' GREY SAND 3-5' TAN SAND	729 El. 15.0 2.00 MIN/INCH 0-2' GREY SAND 2-3.5' TAN SAND	728 El. 17.4 0.75 MIN/INCH 0-2.5' GREY SAND 2.5-4' TAN SAND 4-5' SAND/SHELL	727 El. 17.2 0.75 MIN/INCH 0-2' GREY SAND 2-5' TAN SAND	726 El. 16.2 1.00 MIN/INCH 0-3' GREY SAND 3-4' TAN SAND	725 El. 16.8 0.75 MIN/INCH 0-3' GREY SAND 3-5' TAN SAND	724 El. 15.6 1.50 MIN/INCH 0-2.5' GREY SAND 2.5-4' TAN SAND	723 El. 17.3 0.75 MIN/INCH 0-1' GREY SAND 1-3.5' TAN SAND 3.5-4.5 SAND/SHELL	722 El. 16.4 1.00 MIN/INCH 0-1.5' GREY SAND 1.5-3' TAN SAND 3-4' SAND/SHELL	721 El. 16.2 1.00 MIN/INCH 0-2' GREY SAND 2-4' SAND/SHELL	720 El. 14.6 2.50 MIN/INCH 0-1.5' GREY SAND 1.5-3' SAND/SHELL	719 El. 13.8 3.00 MIN/INCH 0-1' GREY SAND 1-2' SAND/SHELL	718 El. 14.2 2.75 MIN/INCH 0-1.5' GREY SAND 1.5-2.5' SAND/SHELL	717 El. 14.7 2.50 MIN/INCH 0-2' GREY SAND 2-3' SAND/SHELL	716 El. 15.0 2.00 MIN/INCH 0-4' GREY SAND 4' SAND/SHELL 2-4' SAND/SHELL
701 El. 15.9 1.50 MIN/INCH 0-2.5' GREY SAND 2.5-4.5' SAND/SHELL	702 El. 16.0 1.00 MIN/INCH 0-2' GREY SAND 2-3' TAN SAND 3-4' SAND/SHELL	703 El. 17.4 0.75 MIN/INCH 0-2.5' GREY SAND 2.5-4' TAN SAND 4-5' SAND/SHELL	704 El. 15.9 1.50 MIN/INCH 0-2' GREY SAND 2-4' TAN SAND	705 El. 17.2 0.75 MIN/INCH 0-2' GREY SAND 2-1' TAN SAND 4-5' SAND/SHELL	706 El. 17.0 0.75 MIN/INCH 0-2' GREY SAND 2-4' TAN SAND 4-5' SAND/SHELL	707 El. 15.8 1.50 MIN/INCH 0-1' GREY SAND 1-3' TAN SAND 3-4' SAND/SHELL	708 El. 17.1 0.75 MIN/INCH 0-2' GREY SAND 2-4' TAN SAND 4-5' SAND/SHELL	709 El. 16.6 0.75 MIN/INCH 0-2' GREY SAND 2-4' TAN SAND 4-5' SAND/SHELL	710 El. 16.1 1.00 MIN/INCH 0-2' GREY SAND 2-3' TAN SAND 3-4' SAND/SHELL	711 El. 15.5 2.00 MIN/INCH 0-2' GREY SAND 2-4' SAND/SHELL	712 El. 13.8 3.00 MIN/INCH 0-2' GREY SAND 2' HARDPAN	713 El. 14.6 2.50 MIN/INCH 0-2' GREY SAND 2-4' SAND/SHELL	714 El. 14.8 2.50 MIN/INCH 0-2' GREY SAND 2-4' SAND/SHELL	715 El. 15.1 2.00 MIN/INCH 0-1.5' GREY SAND 1.5' SAND/SHELL
731 El. 17.1 0.75 MIN/INCH 0-2.5' GREY SAND 2.5-4' TAN SAND 4-5' SAND/SHELL	732 El. 16.7 0.75 MIN/INCH 0-2.5' GREY SAND 2.5-4' TAN SAND 4-5' SAND/SHELL	733 El. 17.2 0.75 MIN/INCH 0-2' GREY SAND 2-3' TAN SAND 3-4.5' SAND/SHELL	734 El. 16.8 0.75 MIN/INCH 0-3' GREY SAND 3-4.5' TAN SAND	735 El. 16.4 1.00 MIN/INCH 0-3' GREY SAND 3-5' TAN SAND	736 El. 15.7 1.50 MIN/INCH 0-3' GREY SAND 3-4' TAN SAND	737 El. 15.3 2.00 MIN/INCH 0-3' GREY SAND 3-4' SAND/SHELL	738 El. 17.0 0.75 MIN/INCH 0-2' GREY SAND 2-4' TAN SAND 4-5' SAND/SHELL	739 El. 16.2 1.00 MIN/INCH 0-2' GREY SAND 2-3' TAN SAND 3-4' SAND/SHELL	740 El. 15.5 1.50 MIN/INCH 0-2' GREY SAND 2-3' TAN SAND 3-4' SAND/SHELL	741 El. 16.9 0.75 MIN/INCH 0-2' GREY SAND 2-4' TAN SAND 4-5' SAND/SHELL	742 El. 13.5 3.00 MIN/INCH 0-1.5' GREY SAND 1.5' HARDPAN	743 El. 14.3 2.75 MIN/INCH 0-2' GREY SAND 2-3' SAND/SHELL	744 El. 15.5 1.85 MIN/INCH 0-2' GREY SAND 2-3' SAND/SHELL	745 El. 15.4 2.00 MIN/INCH 0-2' GREY SAND 2-3' TAN SAND 3' HARDPAN
760 El. 16.9 0.75 MIN/INCH 0-1.5' GREY SAND 1.5-3.5' TAN SAND 3.5-4.5' SAND/SHELL	759 El. 16.8 0.75 MIN/INCH 0-2' GREY SAND 2-3.5' TAN SAND 3.5-4.5' SAND/SHELL	758 El. 16.2 1.00 MIN/INCH 0-2' GREY SAND 2-4' TAN SAND >4' HARDPAN	757 El. 16.6 0.75 MIN/INCH 0-1.5' GREY SAND 1.5-4' TAN SAND >4' HARDPAN	756 El. 16.9 0.75 MIN/INCH 0-3' GREY SAND 3-3' TAN SAND 3-4' HARDPAN	755 El. 16.4 1.00 MIN/INCH 0-3' GREY SAND 3-4' TAN SAND	754 El. 15.2 2.00 MIN/INCH 0-2' GREY SAND 2-3' TAN SAND 3-4' HARDPAN	753 El. 17.0 0.75 MIN/INCH 0-2' GREY SAND 2-5' TAN SAND	752 El. 16.2 1.00 MIN/INCH 0-2' GREY SAND 2-3' TAN SAND 3-4' SAND/SHELL	751 El. 15.9 1.50 MIN/INCH 0-2' GREY SAND 2-4' TAN SAND >4' HARDPAN	750 El. 16.3 1.00 MIN/INCH 0-2' GREY SAND 2-4' TAN SAND 4' HARDPAN	749 El. 14.5 2.75 MIN/INCH 0-1.5' GREY SAND 1.5' HARDPAN	748 El. 14.2 2.75 MIN/INCH 0-2' GREY SAND 2-2.5' SAND/SHELL	747 El. 14.5 2.50 MIN/INCH 0-2' GREY SAND 2-3' SAND/SHELL	746 El. 14.6 2.50 MIN/INCH 0-1' GREY SAND >1' HARDPAN
761 El. 16.9 0.75 MIN/INCH 0-2.5' GREY SAND 2.5-4' TAN SAND 4-5' SAND/SHELL	762 El. 15.7 1.50 MIN/INCH 0-1' GREY SAND 1-2' TAN SAND 2-3' SAND/SHELL	763 El. 16.0 1.00 MIN/INCH 0-2' GREY SAND 2-3' TAN SAND 3-3.5' SAND/SHELL	764 El. 16.5 1.00 MIN/INCH 0-2' GREY SAND 2-3' TAN SAND 3-4' SAND/SHELL	765 El. 17.2 0.75 MIN/INCH 0-2' GREY SAND 2-1' TAN SAND 4-5' SAND/SHELL	766 El. 16.3 1.00 MIN/INCH 0-3' GREY SAND 3-4.5' TAN SAND	767 El. 16.0 1.00 MIN/INCH 0-3' GREY SAND 3-4.5' TAN SAND	768 El. 15.8 1.50 MIN/INCH 0-2' GREY SAND 2-4' TAN SAND	769 El. 16.8 0.75 MIN/INCH 0-3' GREY SAND 3-5' TAN SAND	770 El. 17.3 0.75 MIN/INCH 0-3' GREY SAND 3-5' TAN SAND	771 El. 16.0 1.00 MIN/INCH 0-2' GREY SAND 2-4' TAN SAND	772 El. 13.6 3.00 MIN/INCH 0-1' GREY SAND >1' HARDPAN	773 El. 14.0 2.75 MIN/INCH 0-1' GREY SAND >1' HARDPAN	774 El. 14.1 2.75 MIN/INCH 0-1' GREY SAND >1' HARDPAN	775 El. 14.2 2.75 MIN/INCH 0-1' GREY SAND 1-2' TAN SAND
701 El. 15.7 1.50 MIN/INCH 0-3' GREY SAND 3-4' TAN SAND	700 El. 17.9 0.75 MIN/INCH 0-3' GREY SAND 3-5' TAN SAND	789 El. 16.8 0.75 MIN/INCH 0-3' GREY SAND 3-4' SAND/SHELL	788 El. 16.8 0.75 MIN/INCH 0-3' GREY SAND 3-4' SAND/SHELL	787 El. 16.4 1.00 MIN/INCH 0-2.5' GREY SAND 2.5-4' SAND/SHELL	786 El. 15.7 1.50 MIN/INCH 0-2' GREY SAND 2-3' TAN SAND 3-4' SAND/SHELL	785 El. 14.6 2.50 MIN/INCH 0-1' GREY SAND 1-2' TAN SAND 2-3' SAND/SHELL	784 El. 15.3 2.00 MIN/INCH 0-2' GREY SAND 2-3' TAN SAND	783 El. 15.6 1.50 MIN/INCH 0-3' GREY SAND 3-4' TAN SAND	782 El. 16.4 1.00 MIN/INCH 0-3' GREY SAND 3-4' TAN SAND	781 El. 14.8 0.75 MIN/INCH 0-3' GREY SAND 3-4' SAND/SHELL	779 El. 13.9 3.00 MIN/INCH 0-2' GREY SAND 2-3' SAND/SHELL	778 El. 15.2 2.00 MIN/INCH 0-2.5' GREY SAND 2.5-4' SAND/SHELL	777 El. 14.5 2.50 MIN/INCH 0-1' GREY SAND 1-2' TAN SAND	776 El. 14.6 2.50 MIN/INCH 0-1' GREY SAND 1-2' TAN SAND



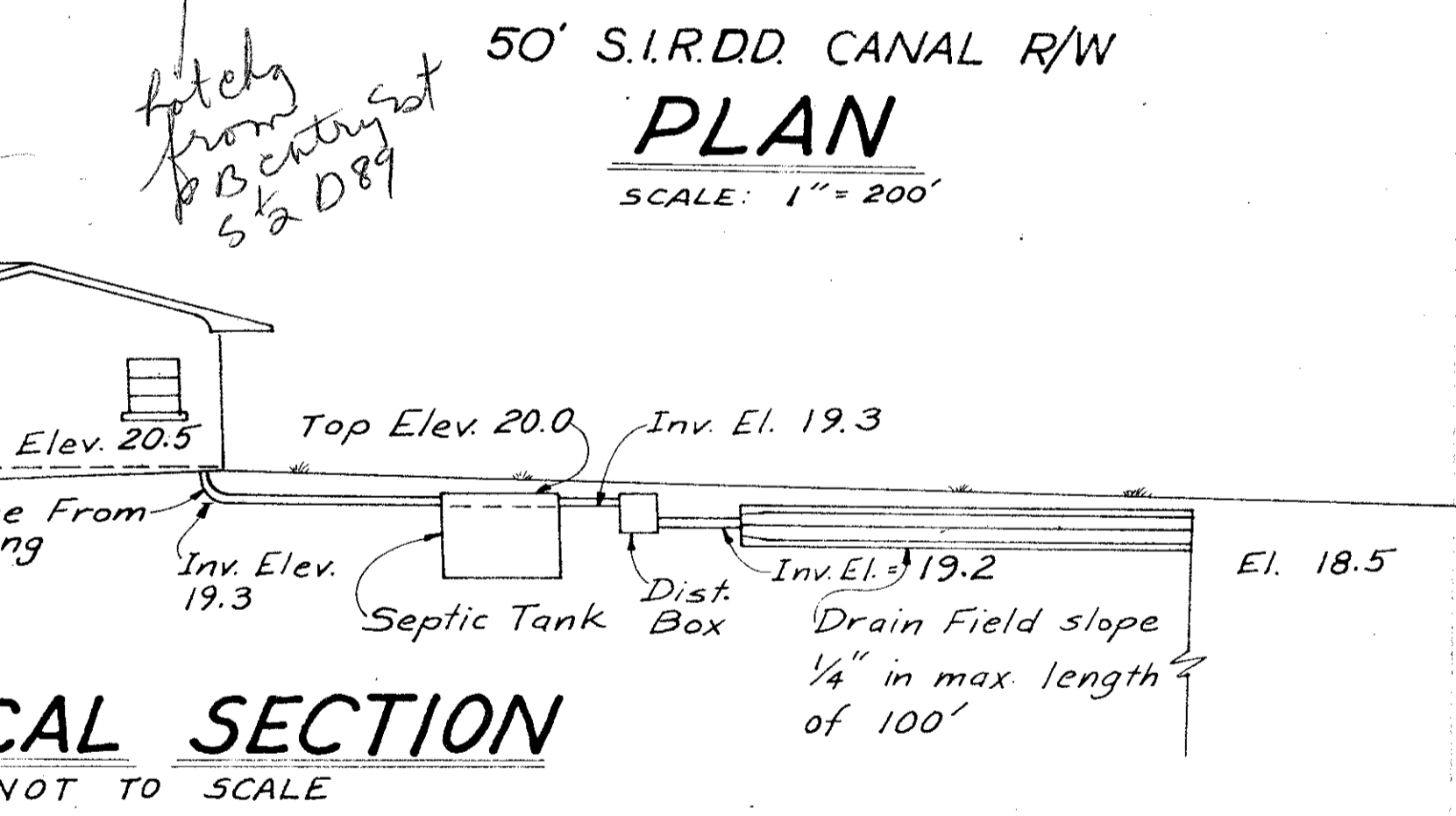
RESULTS OF TEST FOR PROPER SIZE

SITES	SEPTIC TANK SIZE IN GALLONS			SITES	DRAINFIELD SIZE IN SQUARE FEET		
	2 BED RM	3 BED RM	4 BED RM		2 BED RM	3 BED RM	4 BED RM
ALL	750	900	1050	ALL EXCEPT AS LISTED BELOW	170	255	340
				712-714	200	300	400
				717-720			
				742, 743			
				746-749, 772-775			
				776, 777, 779, 785			

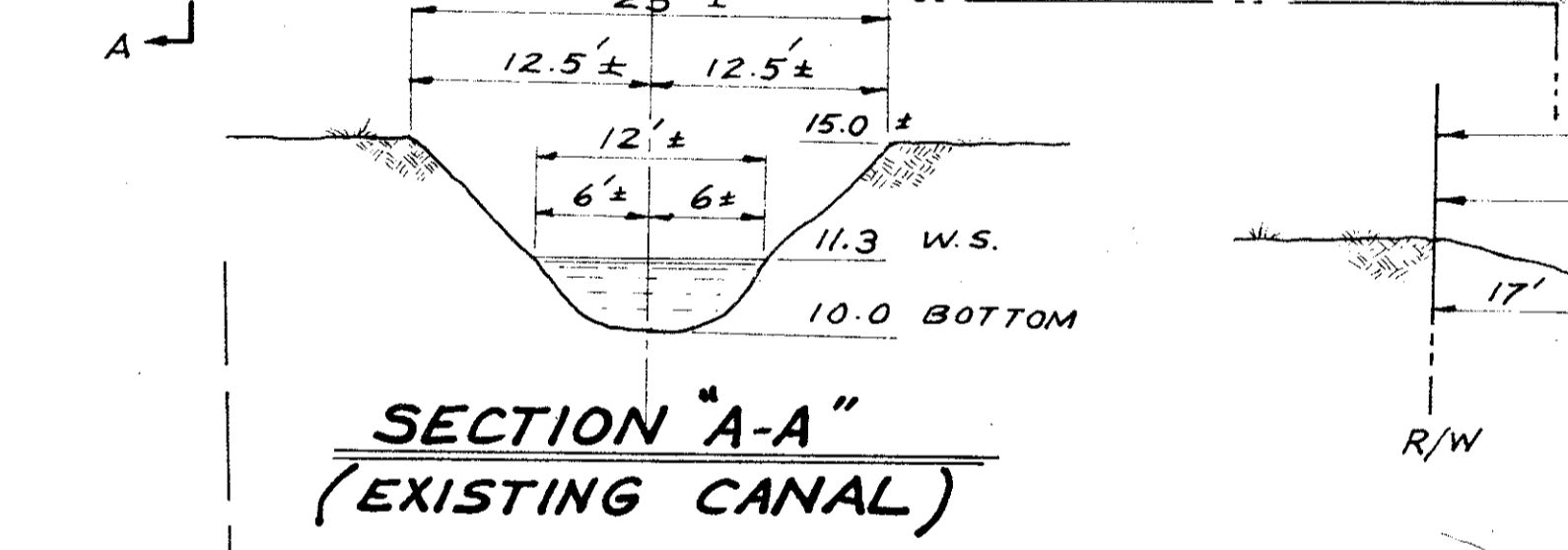
NOTES:

For each additional bedroom add 150 gallons to Septic Tank size.

The finished grade of each site shall be designed to carry rain water away from the Drainfield Area. dense, impervious soils or muck found in the of the drainfield shall be removed to a depth of 4' and replaced with clean sand fill.



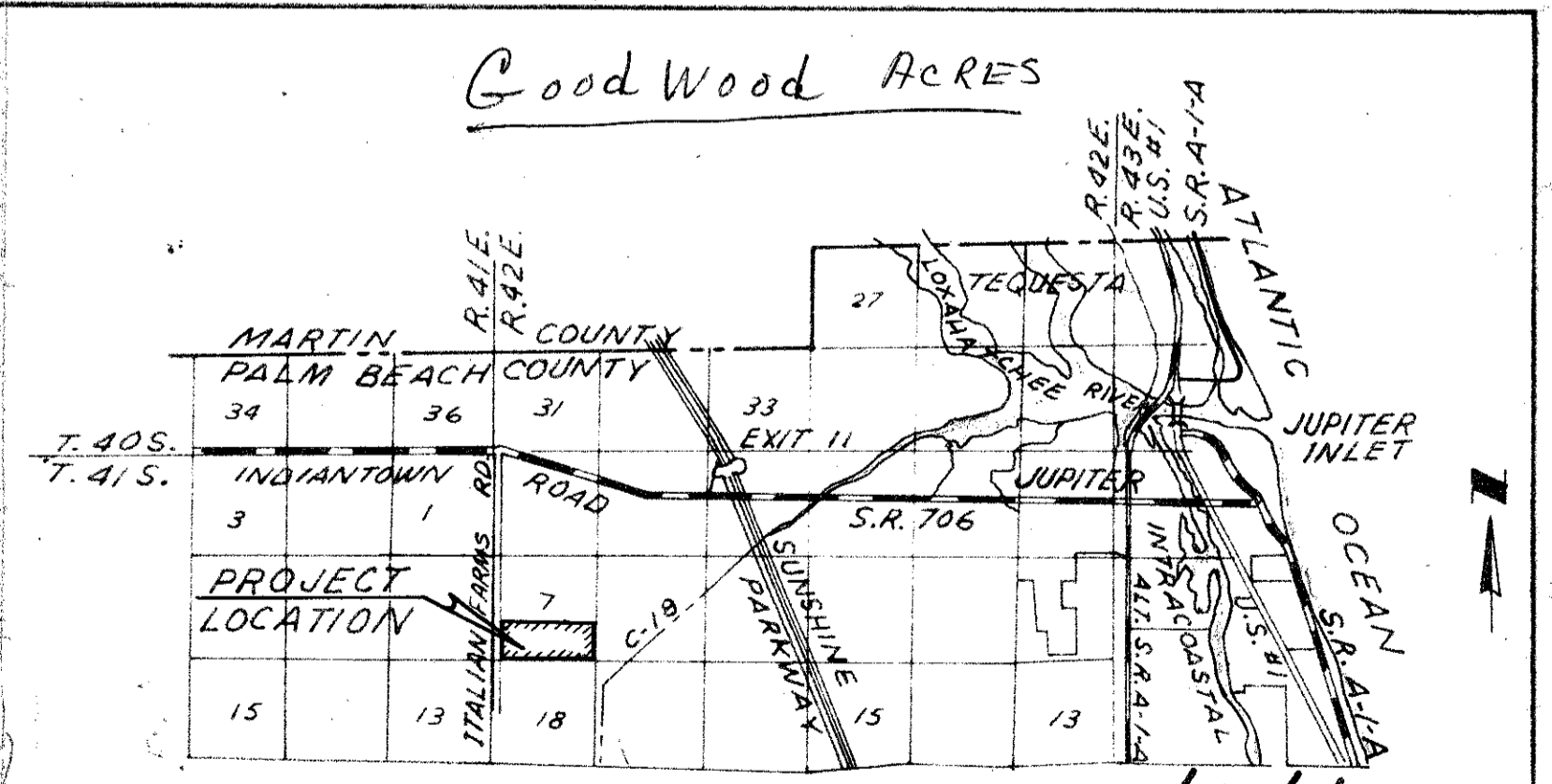
- ### DRAINFIELD INSTALLATION
- Filter Material shall encase tile with a minimum depth of 6" under the tile and have a minimum total depth of 12 inches extending throughout the width of trench.
 - Maximum depth from invert of drain tile to finish ground surface shall not exceed 24 inches.
 - Minimum earth cover over top of drain tile shall be 6 inches.
 - Minimum drain tile invert elevation is 18.5 feet M.S.L.
 - Septic Tank or Drainfield shall not be located within 50 feet from Mean High Water Line of Lakes, Canals, or other waters, 75 feet from Private Well, 100 feet from Public Well, within at least 5 feet of any building, at least 10 feet from water supply line, or at least 5 feet from property line.



- ### CORE NOTES
- Soil Classification of Materials is based on Chapter 10D-6 (F.A.C.).
 - Soils and ground water elevations were as observed on the completion dates of the borings.
 - All elevations are referenced to Mean Sea Level Datum.

HYDROLOGIC DATA REPORT

20 YEAR FLOOD STAGE ELEV. 15.2 M.S.L.
REFERENCE: File report Submitted to the County Engineers Office of South Indian River Drainage District.



DATE	BY	DESCRIPTION	REVISION

Date: DEC. 1972	Scale: SHOWN	Plat Book:	Page:
SEPTIC TANK INSTALLATION REPORT FOR			
WILLIAM BOSSO			
SECTION 7, TWP 41S, R 42E, PALM BEACH COUNTY, FLORIDA			
LINDAHL - O'BRIEN, INC.			1 1
ENGINEERS - SURVEYORS			
P.O. Box 727 • Jupiter, Florida 33458			